

MODEL '99
LM485KX:KS
ギヤケース部
GEAR CASE

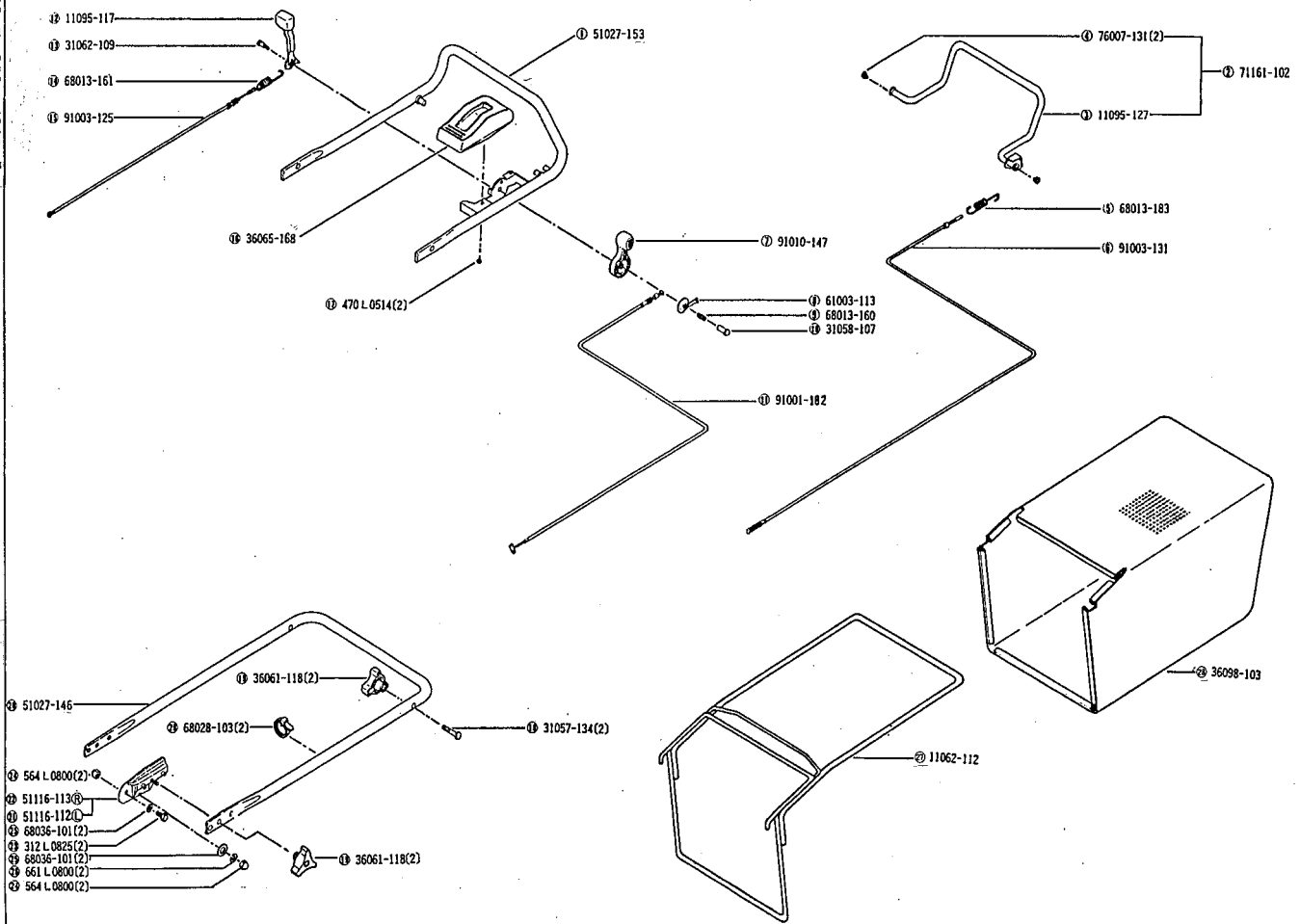
PARTS LIST

MODEL : LM485 KX,KS (GEAR CASE)

'89 Spec.

Jan. 25, 1991 E. Kanoh 1 / 2

REF. NO.	PARTS NO.	PARTS NAME	Q'TY	PRICE(¥)	Q'TY /100 SETS /YEAR	REMARKS
1	71008-205	GEAR CASE ASS'Y	1		3	
2	51001-195	GEAR CASE	(1)		3	
3	51001-196	GEAR CASE	(1)		3	
4	61002-161	OIL SEAL SD 10 20 5	(1)		5	
5	61002-162	OIL SEAL SD 8 14 4	(2)		10	
6	61002-163	OIL SEAL SD 15 24 5	(2)		10	
7	64024-104	SHIFTER SHAFT	(1)		3	
8	214B11000	O-RING S110	(1)		5	
9	11006-101	STAY C.P.	(1)		3	
10	61024-121	SPACER	(1)		5	
11	78001-128	BEVEL GEAR	(1)		3	
12	61024-117	SPACER	(1)		5	
13	78003-111	PINION	(1)		3	
14	91097-101	UNIVERSAL JOINT	(1)		3	
15	812V1800	C-SNAP RING FOR SHAFT ϕ 18	((1))		1	
16	717B0418	PARALLEL PIN ϕ 4x18	((1))		3	
17	64014-181	SHAFT	(1)		3	
18	68013-167	SPRING	(1)		3	
19	31034-122	PIN	(1)		3	
20	64014-157	SHAFT	(1)		3	
21	11097-106	SHIFTER FORK	(1)		3	
22	11129-104	CLUTCH	(1)		3	
23	61024-118	SPACER	(2)		6	
24	78004-139	GEAR	(1)		3	
25	78004-140	GEAR	(1)		3	
26	64014-185	SHAFT	(1)		3	
27	78012-107	GEAR C.P.	(1)		3	
28	719B0620	PARALLEL PIN ϕ 6x20	(1)		3	
29	11104-119	ARM	(1)		3	
30	11104-137	ARM	(1)		3	



MODEL 89
LM485KS
ハンドル部
HANDLE

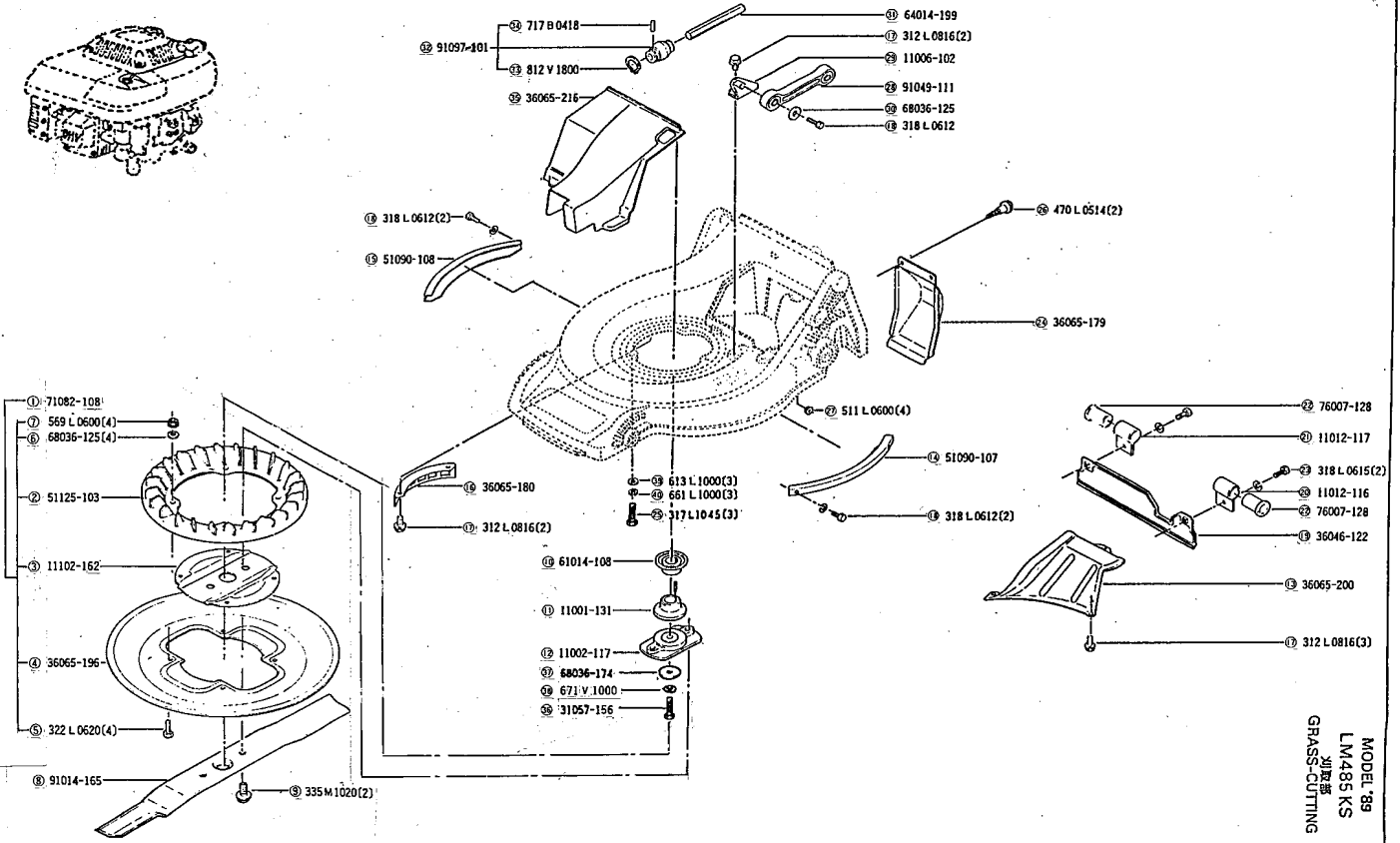
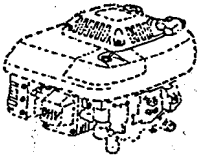
PARTS LIST

MODEL : LM485 KS (HANDLE)

'89 Spec.

Jan. 26, 1991 E. Kanoh 1 / 1

REF. NO.	PARTS NO.	PARTS NAME	Q'TY	PRICE(¥)	Q'TY /100 SETS /YEAR	REMARKS
1	51027-153	HANDLE	1	7,820	3	
2	71161-102	LEVER ASS'Y	1	1,910	5	
3	11095-127	LEVER	(1)	1,840	3	
4	76007-131	BUSH	(2)	40	30	
5	68013-183	SPRING	1	410	5	
6	91003-131	CONTROL CABLE	1	1,040	5	
7	91010-147	THROTTLE LEVER	1	450	10	
8	61003-113	THRUST PLATE	1	120	5	
9	68013-160	SPRING	1	110	3	
10	31058-107	HEXAGON NUT	1	200	3	
11	91001-182	THROTTLE WIRE	1	1,060	10	
12	11095-117	LEVER	1	1,270	3	
13	31062-109	PRE-COAT LOCK BOLT	1	85	5	
14	68013-161	SPRING	1	320	3	
15	91003-125	CONTROL CABLE	1	920	5	
16	36065-168	COVER	1	1,040	3	
17	470L0514	(+) TAPPING SCREW M5x14	2	20	6	
18	31057-134	BOLT	2	130	6	
19	36061-118	KNOB	4	370	12	
20	51027-146	HANDLE	1	4,490	3	
21	51116-112	HANDLE BRACKET	1	1,210	3	(L)
22	51116-113	HANDLE BRACKET	1	1,210	3	(R)
23	312L0825	HEXAGON BOLT(W/SW) M8x25	2	40	6	
24	564L0800	HEXAGON CAP NUT M8	4	35	12	
25	68036-101	WASHER	4	40	12	
26	661L0800	SPRING LOCK WASHER M8	2	10	6	
27	11062-112	FRAME C.P.	1	5,010	3	
28	36098-103	GRASS BAG C.P.	1	6,670	15	
29	68028-103	WIRE BAND	2	40	6	



MODEL '89
LM485 KS
割草機
GRASS-CUTTING

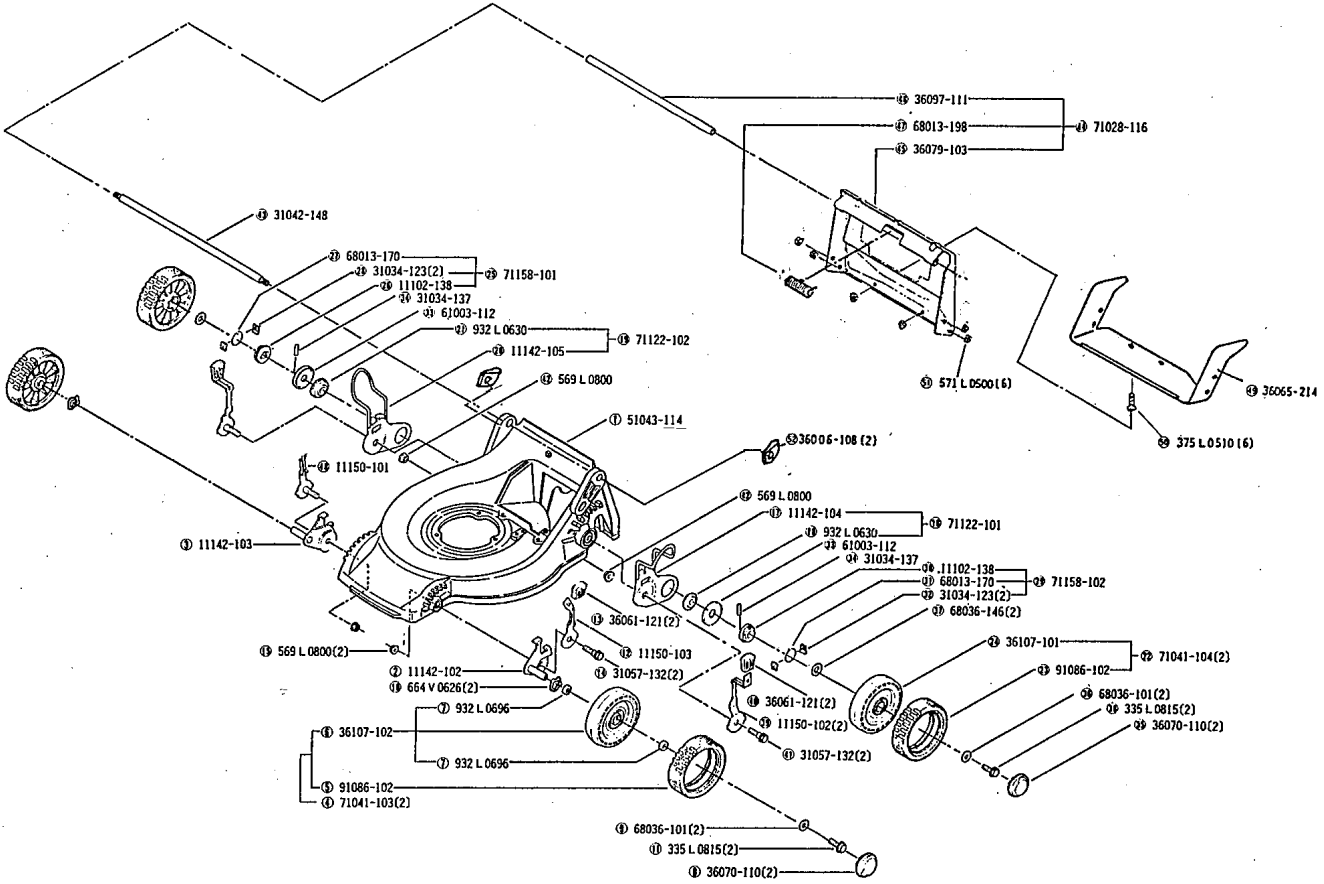
PARTS LIST

MODEL : LM485 KS (GRASS-CUTTING)

'89 Spec.

Jan. 26, 1991 E. Kanoh 1 / 2

REF. NO.	PARTS NO.	PARTS NAME	Q'TY	PRICE(¥)	Q'TY /100 SETS /YEAR	REMARKS
1	71082-108	FAN ASS'Y	1	3,740	3	
2	51125-103	FAN	(1)	1,270	5	
3	11102-162	HOLDER	(1)	1,040	5	
4	36065-196	COVER	(1)	1,130	3	
5	322L0620	(+)HEXAGON BOLT M6x20	(4)	40	20	
6	68036-125	WASHER	(4)	30	12	
7	569L0600	FLANGE NYLON NUT M6	(4)	40	12	
8	91014-165	BLADE	1	1,960	15	
9	335M1020	FLANGE BOLT M10x20	2	110	30	
10	61014-108	SHAFT COLLAR	1	1,040	3	
11	11001-131	HOLDER A	1	1,270	3	
12	11002-117	HOLDER B	1	2,650	3	
13	36065-200	COVER	1	1,330	3	
14	51090-107	PROTECTOR	1	520	3	(L)
15	51090-108	PROTECTOR	1	520	3	(R)
16	36065-180	COVER	1	430	3	
17	312L0816	HEXAGON BOLT(W/SW) M8x16	7	30	84	
18	318L0612	(+) HEXAGON BOLT(W/SW) M6x12	5	25	15	
19	36046-122	SAFETY GUARD	1	920	3	
20	11012-116	HANGER BAND	1	230	3	(L)
21	11012-117	HANGER BAND	1	230	3	(R)
22	76007-128	BUSH	2	230	30	
23	318L0615	(+) HEXAGON BOLT(W/SW) M6x15	2	30	6	
24	36065-179	COVER	1	480	3	
25	317L1045	HEXAGON BOLT M10x45	3	55	3	
26	470L0514	(+) TAPPING SCREW M5x14	2	20	6	
27	511L0600	HEXAGON NUT M6	4	10	12	
28	91049-111	CONNECTOR	1	890	3	
29	11006-102	STAY C.P.	1	380	3	
30	68036-125	WASHER	1	30	3	



MODEL 89
LM485KX, KS
走行機
WHEEL

PARTS LIST

MODEL : LM485 KX,KS (WHEEL)

'89 Spec.

Jan. 26,1991 E.Kanoh 1 / 2

REF. NO.	PARTS NO.	PARTS NAME	Q'TY	PRICE(¥)	Q'TY /100 SETS /YEAR	REMARKS
1	51043-114	HOUSING	1		3	
2	11142-102	ADJUSTER	1		3	(L)
3	11142-103	ADJUSTER	1		3	(R)
4	71041-103	WHEEL ASS'Y	2		6	
5	91086-102	TIRE	(1)		15	
6	36107-102	WHEEL	(1)		3	
7	932L0696	BEARING	((2))		10	
8	36070-110	CAP	2		6	
9	68036-101	WASHER	2		6	
10	664V0626	WAVE SPRING WASHER	2		6	
11	335L0815	FLANGE BOLT M8x15	2		6	
12	11150-103	ADJUST LEVER	1		3	
13	36061-121	KNOB	2		6	
14	31057-132	HEXAGON BOLT	2		6	
15	569L0800	FLANGE NYLON NUT M8	2		6	
16	71122-101	ADJUSTER ASS'Y	1		3	(L)
17	11142-104	ADJUSTER	(1)		3	
18	932L0630	BEARING	(1)		5	
19	71122-102	ADJUSTER ASS'Y	1		3	(R)
20	11142-105	ADJUSTER	(1)		3	
21	932L0630	BEARING	(1)		5	
22	71041-104	WHEEL ASS'Y	2		6	
23	91086-102	TIRE	(1)		15	
24	36107-101	WHEEL	(1)		3	
25	71158-101	RATCHET ASS'Y	1		3	(R)
26	11102-138	HOLDER	(1)		3	
27	68013-170	SPRING	(1)		5	
28	31034-123	PIN	(2)		6	
29	71158-102	RATCHET ASS'Y	1		3	(L)
30	11102-138	HOLDER	(1)		3	

